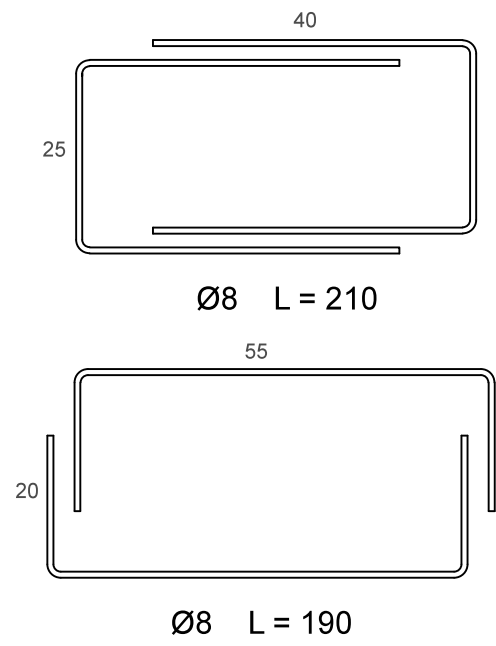


Ordine	Torrino	VI		V	IV	III	II	Dalla base
Pilastro	Sezione	Armatura		Sezione	Armatura			
1	60 x 30		C	70 x 30	B	B	B	A
2	60 x 30		C	70 x 30	B	B	B	A1
3	60 x 30		C	70 x 30	B	B	B	A1
4	30 x 60		C	30 x 70	B	B	B	A
5	30 x 60		C	30 x 70	B	B	B	A
6	60 x 30		C	70 x 30	B	B	B	A1
7	30 x 60	C	C	30 x 70	B1	B1	B1	B1
8	30 x 60	C	C	30 x 70	B1	B1	B1	B1
9	60 x 30		C	70 x 30	B1	B1	B1	B1
10	30 x 60		C	30 x 70	B	B	B	A1
11	30 x 60		C	30 x 70	B	B	B	A1
12	30 x 60		C	30 x 70	B1	B1	B1	B1
13	30 x 60	C	C	30 x 70	B1	B1	B1	B1
14	30 x 60	C	C	30 x 70	B1	B1	B1	B1
15	30 x 60		C	30 x 70	B1	B1	B1	B1
16	30 x 60		C	30 x 70	B	B	B	A
17	30 x 60		C	30 x 70	B	B	B	A
18	60 x 30		C	70 x 30	B	B	B	A1
19	60 x 30	C	C	70 x 30	B	B	B	A1
20	60 x 30	C	C	70 x 30	B	B	B	A1
21	60 x 30		C	70 x 30	B	B	B	A

SEZIONE LONGITUDINALE DEL PILASTRO 6

DISTINTA DELLE ARMATURE

STAFFE NEL NODO (Scala 1:10)



Ø8/15

Ø8/9.6

Ø8/9.6

Ø8/9.6

Ø8/15

Ø8/9.6

Ø8/9.6

Ø8/9.6

Ø8/15

Ø8/9.6

Ø8/9.6

Ø8/9.6

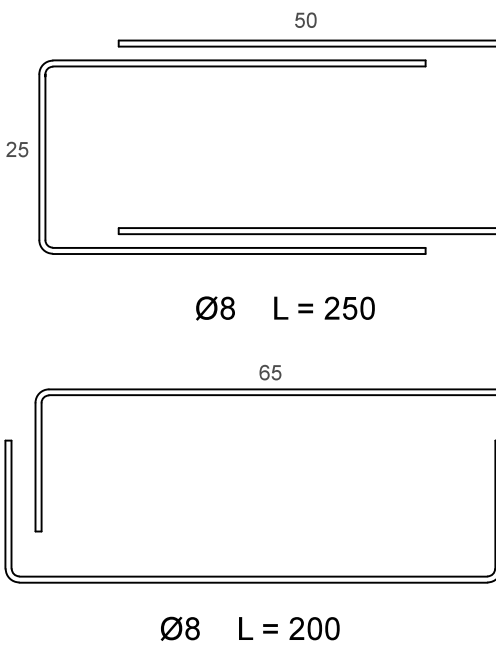
Ø8/15

VI ordine

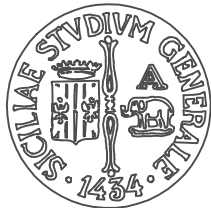
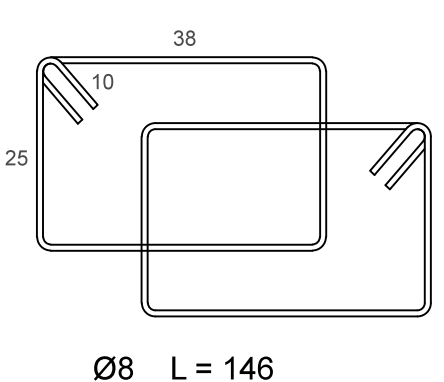
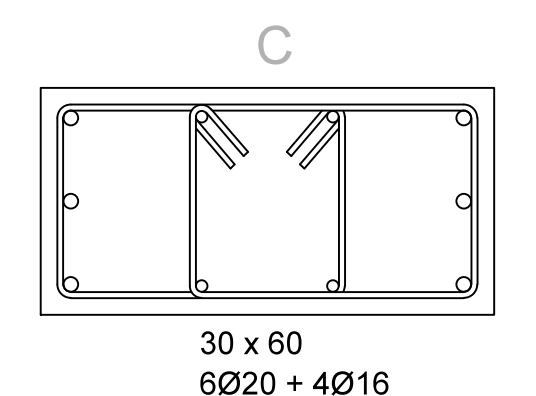
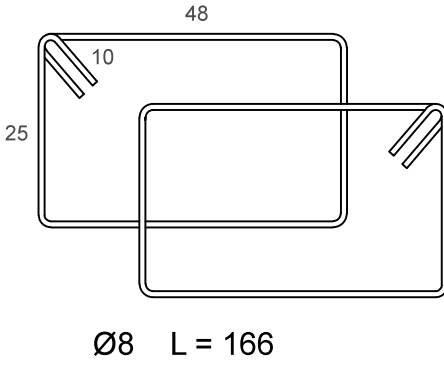
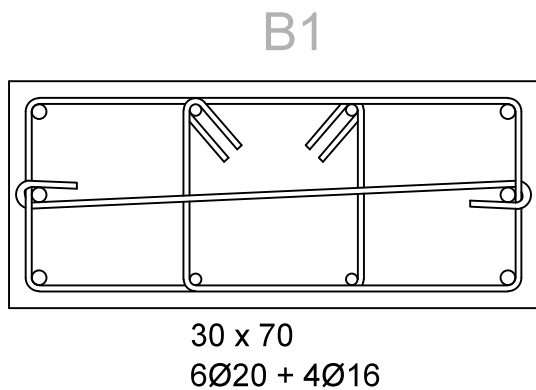
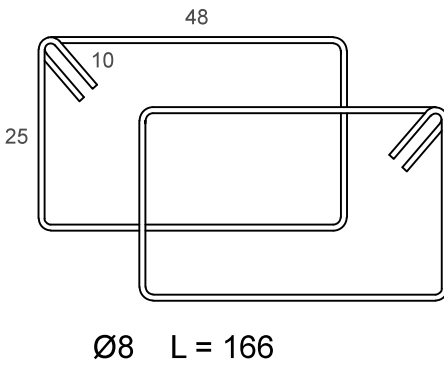
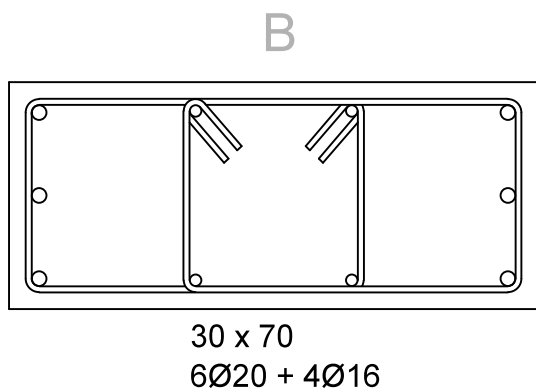
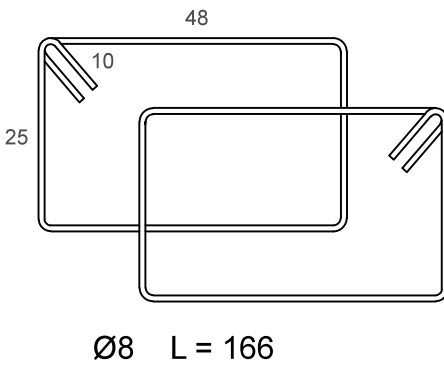
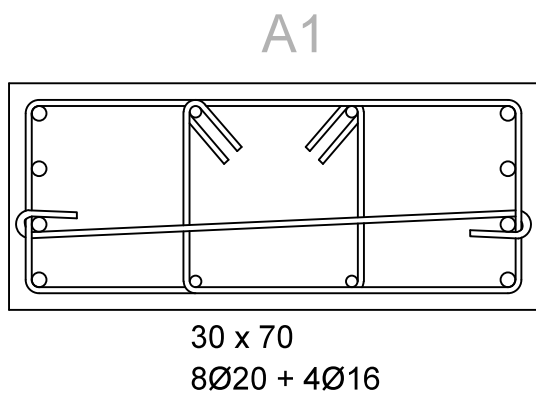
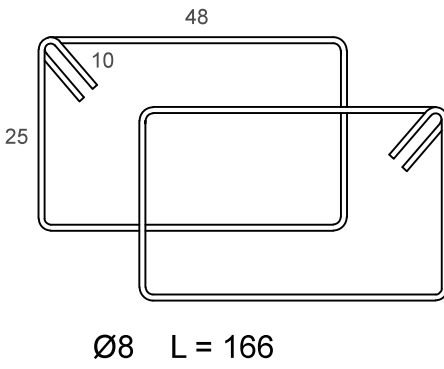
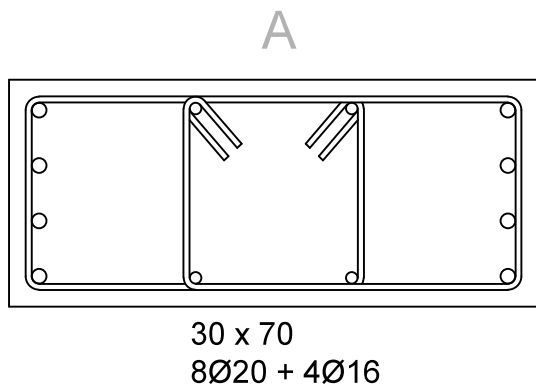
V ordine

IV ordine

STAFFE NEL NODO (Scala 1:10)



SEZIONI TRASVERSALI PILASTRI (Scala 1:10)



UNIVERSITÀ DI CATANIA

Dipartimento di
Ingegneria Civile e Architettura

PROGETTO DI STRUTTURE IN ZONA SISMICA - MOD. A

Prof. Ing. Aurelio Gheresi - A.A. 2016/17

PROGETTO DI ELEMENTI STRUTTURALI IN C.A.

- Tav. 1

Architettonico

Tav. 2

Carpenteria

Tav. 3

Trave

Tav. 4

Pilastri

Scala 1:50

Scala 1:50

Scala 1:50

Scala 1:20
- MATERIALI UTILIZZATI

Calcestruzzo: C25/30 Acciaio: B450C
- Allievo

Sebastiano Fichera

O49/000151

Docente

Prof. Ing. Aurelio Gheresi